

Architex® | Wieland Healthcare

DIGITAL PRODUCT LISTING

For more colors and complete product information visit architex-ljh.com

Pattern	Width	Repeat	Content / Finish	Performance	Cleaning
Anemone	54"	26" V, 10.6" H Railroaded, Reverse Repeat	100% Vinyl	500,000+ Antimicrobial	WS
Bermuda	54"	None	100% Polyurethane (Polycarbonate)	100,000+ Hydrolysis 7+ Weeks	WS
Emergent	54"	15" V, None H	100% Polyurethane (Polycarbonate)	100,000+ Hydrolysis 5+ Weeks	WS
Posy	54"	18.5" V, 21" H	100% Polyurethane (Polycarbonate)	100,000+ Hydrolysis 5+ Weeks	WS
Ryder	54"	None	100% Polyurethane (Polycarbonate)	300,000+ Hydrolysis 10+ Weeks	WS
Ultrachevron	54"	None	52% Acrylic, 26% Polyamide, 15% Polyester, 7% Cotton	250,000+ Inherently Ink and Stain Resistant	W



Bermuda Horseshoe Bay



Bermuda Sugar Cane



Bermuda Harrington Sound



Bermuda Gibbs Hill



Bermuda Newton Bay



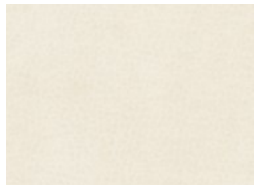
Bermuda Castle Harbour



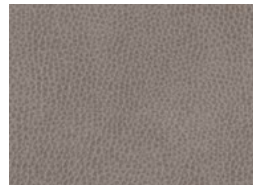
Bermuda Surfside Beach



Ryder Wheat



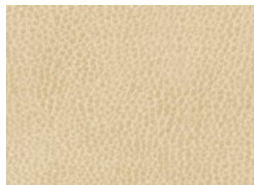
Ryder Snow



Ryder Windy



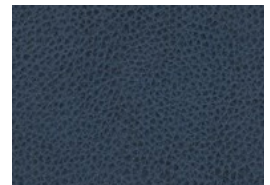
Ryder Gulfstream



Ryder Arlington



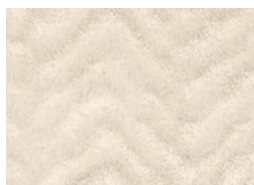
Ryder Chimney



Ryder Thistledown



Ultrachevron Acorn



Ultrachevron Creme



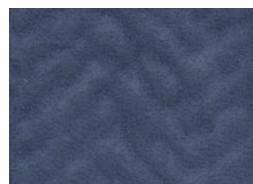
Ultrachevron Silver



Ultrachevron Dew



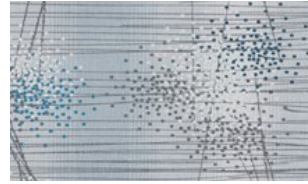
Ultrachevron Boulder



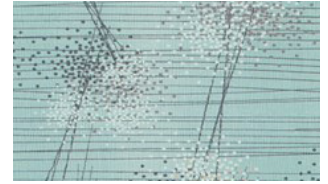
Ultrachevron Tide



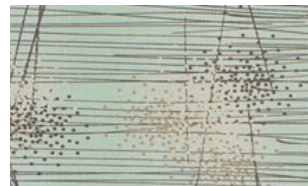
Posy Ravensara



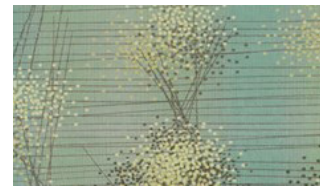
Posy Juniper



Posy Laurel



Posy Clary Sage



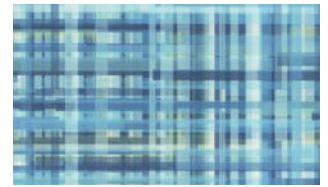
Posy Dew



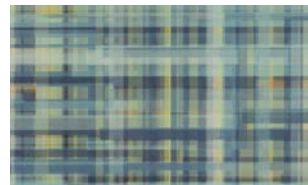
Emergent Sassafras



Emergent Balsa



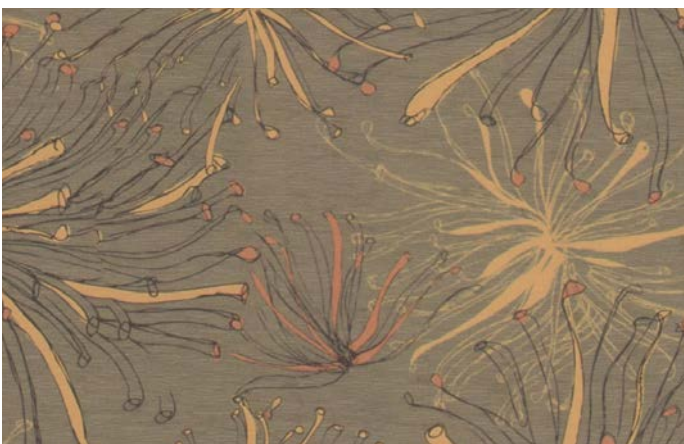
Emergent Willow



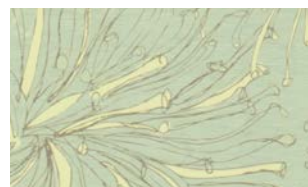
Emergent Bayleaf



Emergent Juniper



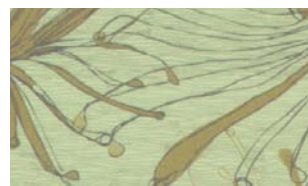
Anemone Invigorate



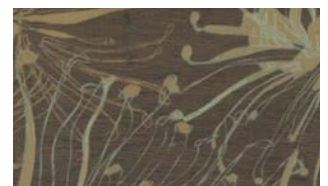
Anemone Purify



Anemone Thought



Anemone Reflect



Anemone Sustain